

MICHAEL

Some game. I'd rather eat spinach.

MARY POPPINS

Come along, Bert.

MICHAEL

You can't come with us. You're too dirty. And we don't want to go to the stinky park anyway.

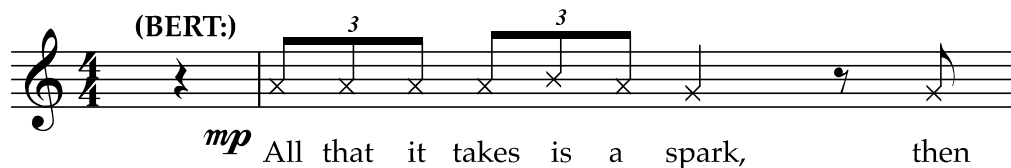
BERT

Oh, yes you do. 'Cause when you walk with Mary Poppins, you go to places you never dreamed of.

(#10 – JOLLY HOLIDAY.)

JOLLY HOLIDAY

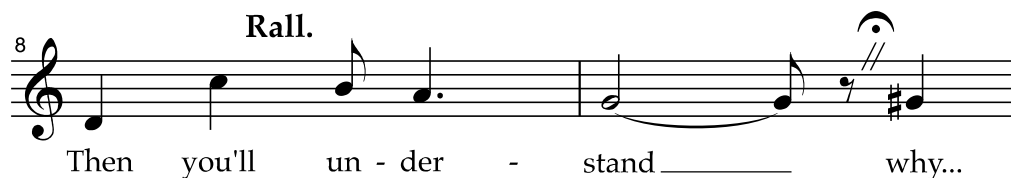
Freely



(BERT moves into the park with MARY POPPINS. JANE and MICHAEL follow. PARK STROLLERS meander.)



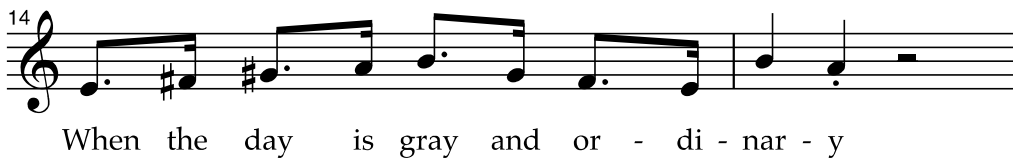
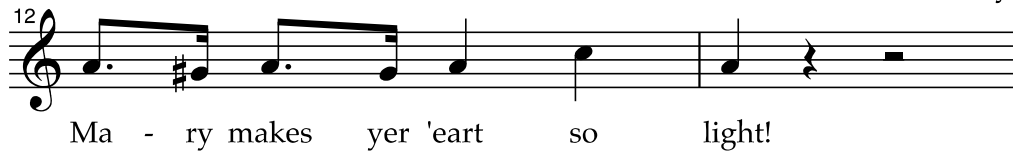
Rall.



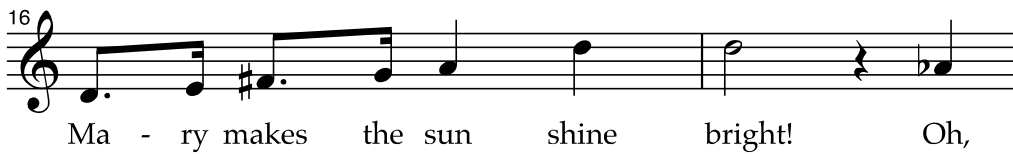
Tempo



MARY POPPINS: Oh really!



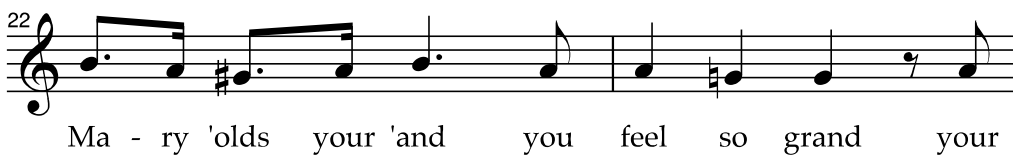
MARY POPPINS: You do talk nonsense, Bert.



MARY POPPINS: I haven't the faintest idea what—



Più mosso



MARY POPPINS: You've
enough brass for all of us.

(BERT:)

24

'eart starts beat-in' like a big brass band *mf* Oh

PARK STROLLERS:

Shh!

(BERT:)

27

it's a jol - ly 'ol - i-day with Ma - ry No

(BERT:) (to the CHILDREN)
Come on, you two.

Poco accel.

29

won - der that it's Ma - ry that we love!

Poco più mosso

JANE, MICHAEL:

32

mp Bor - ing just like oth - er nan - nies

(BERT and MARY POPPINS exit. JANE and MICHAEL lag
behind until they are alone near a statue of NELEUS on a plinth.)

34

Think - ing parks are good for us

36

It's just sta - tues, ducks, and gran - nies



JANE:

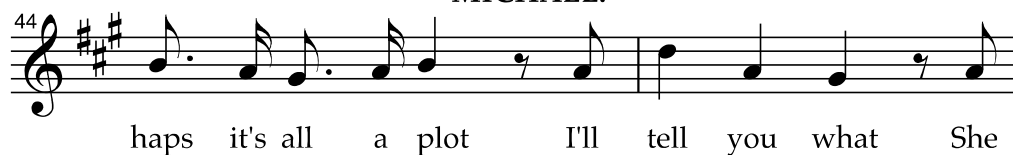


MICHAEL:

JANE:



MICHAEL:



JANE, MICHAEL:



(A creaking
sound is heard.)



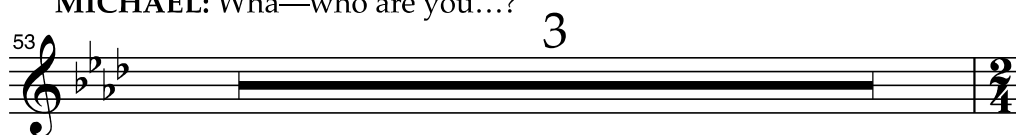
(The creaking sound
grows louder and
more confident.)

JANE: What
was that?



NELEUS: You're quite wrong, you know. When you take a walk with Mary anything can happen.
(JANE and MICHAEL look up. The statue of NELEUS is apparently smiling at them. They are terrified.)

MICHAEL: Wha—who are you...?



NELEUS: I'm Neleus. I've waited half a century to take a walk on a sunny day like this!



(MARY POPPINS enters with BERT, both of them sporting bright summer clothes as the park is transformed from dull and gray to bright and colorful. PARK STROLLERS enter wearing brightly colored clothing.)

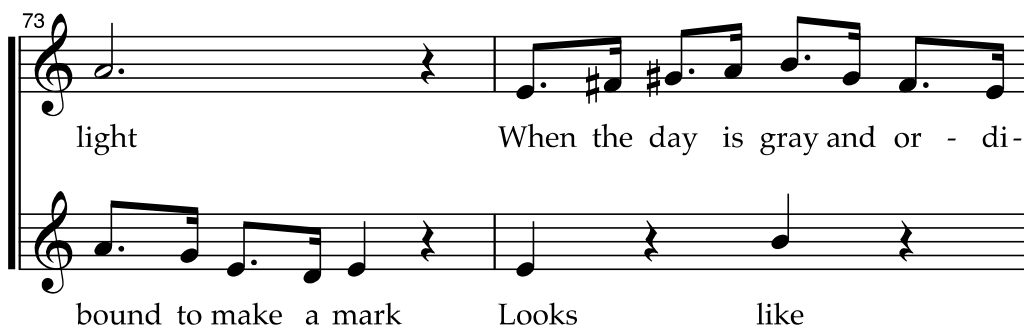




*(The PARK STROLLERS dance. STATUES
come alive and dance with BERT.)*

Molto rall.

Slightly Broader



75

nar - y Ma - ry makes the sun shine

all of us were born to Take a

77

bright Oh, 'ap - pi-ness is bloom - in' all a-

prom-e-nade in the park With our

79

round 'er The daf - fo-dils are smil - in' at the

fine - ly chis - 'led fea - tures We can

81

dove When Ma - ry 'olds your 'and you

look down from a - bove When Ma - ry 'olds your 'and you

83

feel so grand Your 'heart starts beat - in' like a

feel so grand Your 'heart starts beat - in' like a

85

big brass band Oh it's a jol - ly 'ol - i-day with

big brass band It's no

87

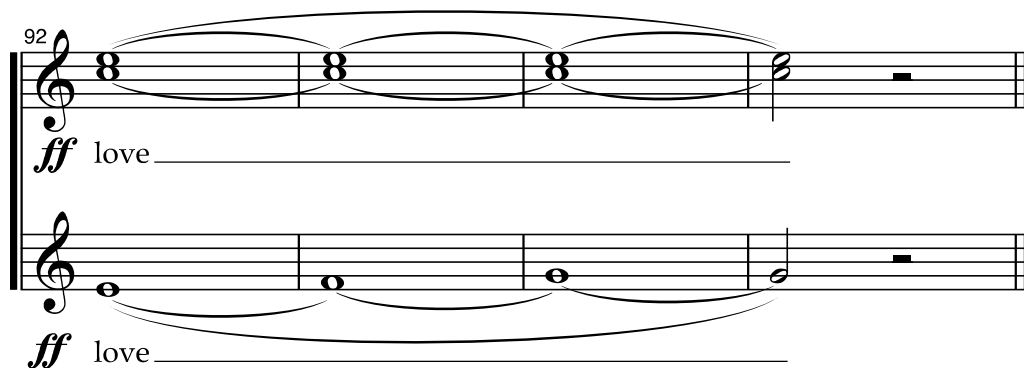
Ma - ry No won - der that it's Ma - ry that we

won - der that it's Ma - ry that we

89

love *f* No won - der that it's Ma - ry that we

love *f* No won - der that it's Ma - ry that we



(#11 – **BUT HOW?** A rainstorm breaks. The STATUES disappear and the PARK STROLLERS exit as the magical color seems to fade from the park. The dazed CHILDREN are left standing in front of NELEUS, who is back on the plinth.)

MICHAEL

Jane. Did that really happen?

JANE

Yes. But how?

NELEUS

Mary Poppins, of course.

(The CHILDREN gasp – then it wasn't a dream! A small thunderclap.)

JANE

But how did you make it happen?

MARY POPPINS

Anything can happen if you let it.

JANE

Mary Poppins, how long will you stay?

MARY POPPINS

We'll see.

MICHAEL

You won't leave us, will you, Mary Poppins?

MARY POPPINS

I'll stay until the wind changes.

(The BIRD WOMAN crosses past. JANE and MICHAEL take notice. MARY calls to get their attention:)

Now, run along in.